

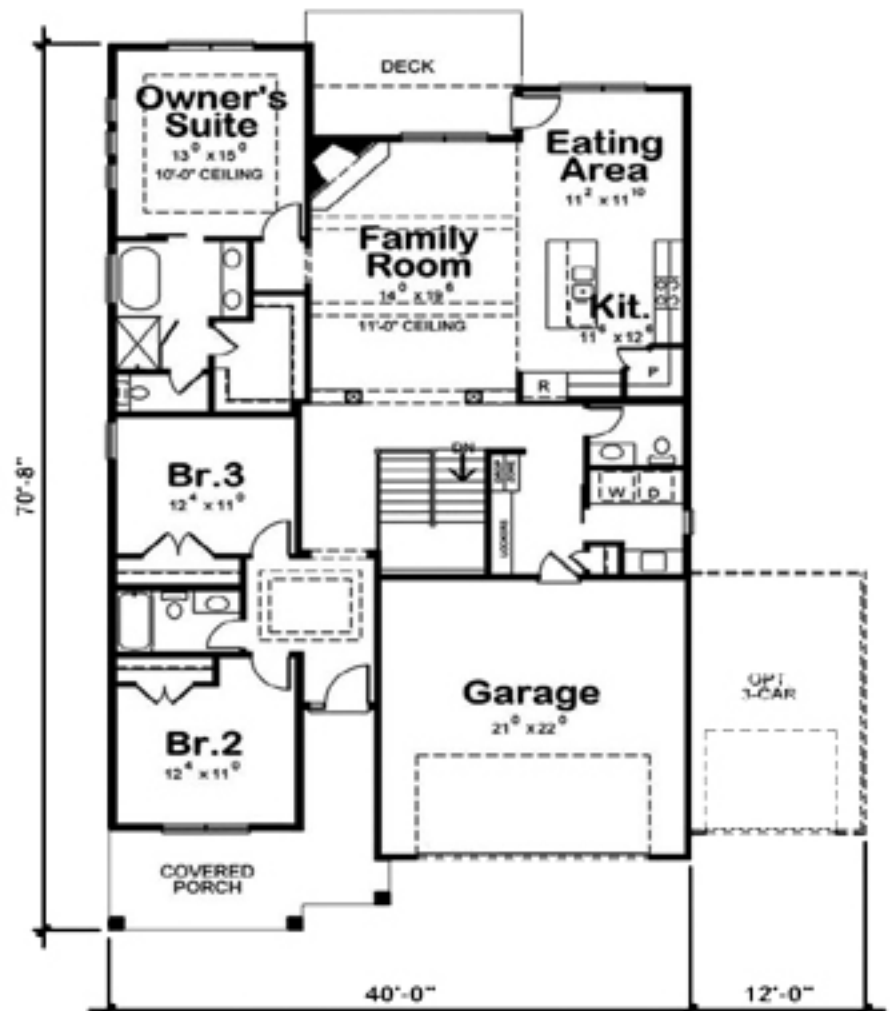


GLENWOOD HEIGHTS

COMMUNITY LIVING

1886 SQUARE FEET	3 BEDROOMS	2 FULL BATH	1 HALF BATH
1 FLOOR	40' 0" WIDTH	70' 8" DEPTH	2 GARAGE BAY

With a classic Craftsman-influenced exterior, this well-designed home has a truly up-to-date interior. Even though only 1886 living square feet, this narrow-lot, ranch floor plan includes 3 bedrooms and 2.5 baths. The family room boasts 11-foot ceilings, a fireplace and access to the rear deck. Only steps away, the kitchen is open to the eating area and includes an island and pantry. We especially like the master suite's bath with its dual vanities and water closet.



Mike Stokes
22 Warren Place
St John's, Newfoundland
A1A 2A1 NL CA
PH 1.855.590.7253
MB 1.709.693.5664
sales@mikestokes.ca